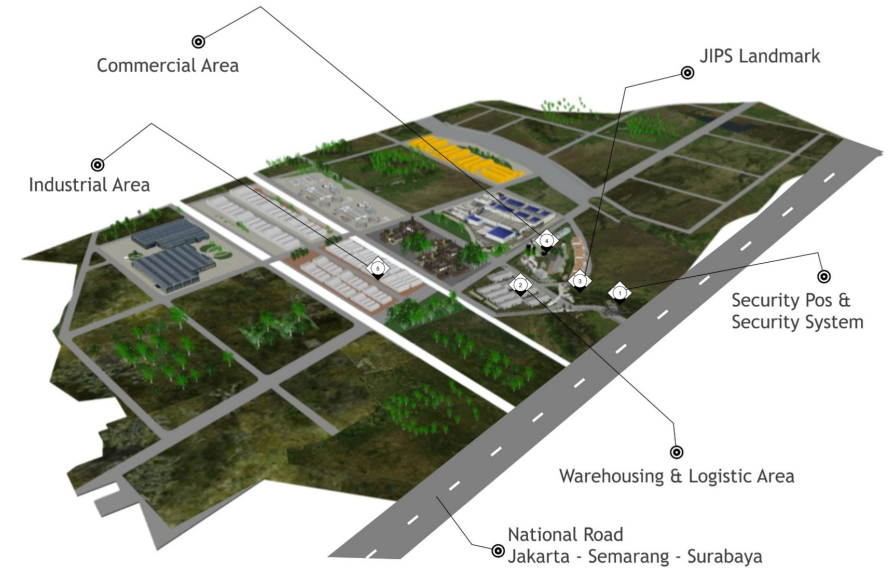
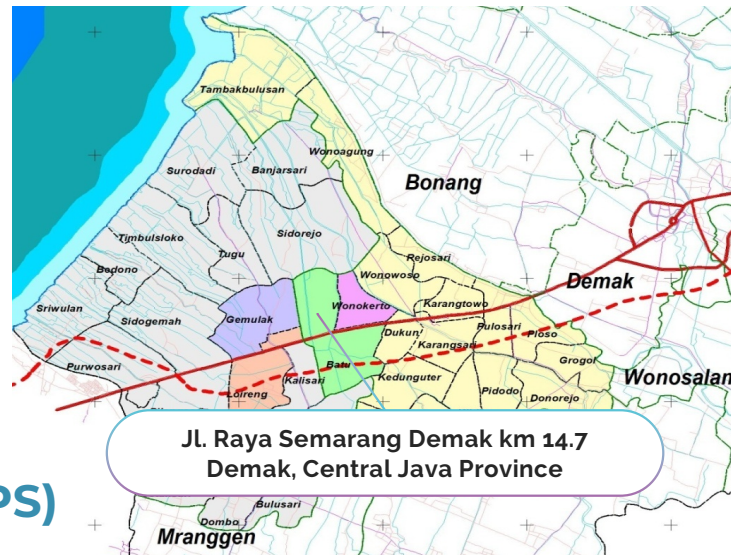




JATENGLAND INDUSTRIAL PARK SAYUNG (JIPS)



300 hectares business and industrial land, managed by PT Jawa Tengah Lahan Andalan, subsidiary of Mugan Group, a superintendent of industrial estate.



has a strategic location because it is located in the path of national Pantura access.



the development is divided into 3 (three) phases, which are phase I: 110 Ha; phase II: 120 Ha; phase III: 70 Ha.



the concept is "one" integrated Cyber Techno Eco

C O N T A C T



Ms. Rini Affiriani
Marketing Communication



PT. Jawa Tengah Lahan Andalan
Menara Suara Merdeka Lt. 8
Jl. Pandanaran 30 Semarang



Telp: +62 24 76928822
Mobile: +6285 215 434 577



Email: info.jatengland@gmail.com