

MEMORANDUM INFORMATION  
DEVELOPMENT OF STREET LIGHTING MADIUN REGENCY



Government Contracting Agency  
**Madiun Regent**



Implementing Unit  
**Transportation Office**



PPP Scheme  
**Design, Build, Finance  
Maintain and Transfer**



Return of Investment Mechanism  
**Availability Payment (IDR 22 up to 23 billion p.a.)**



Cooperation Period  
**10 years**

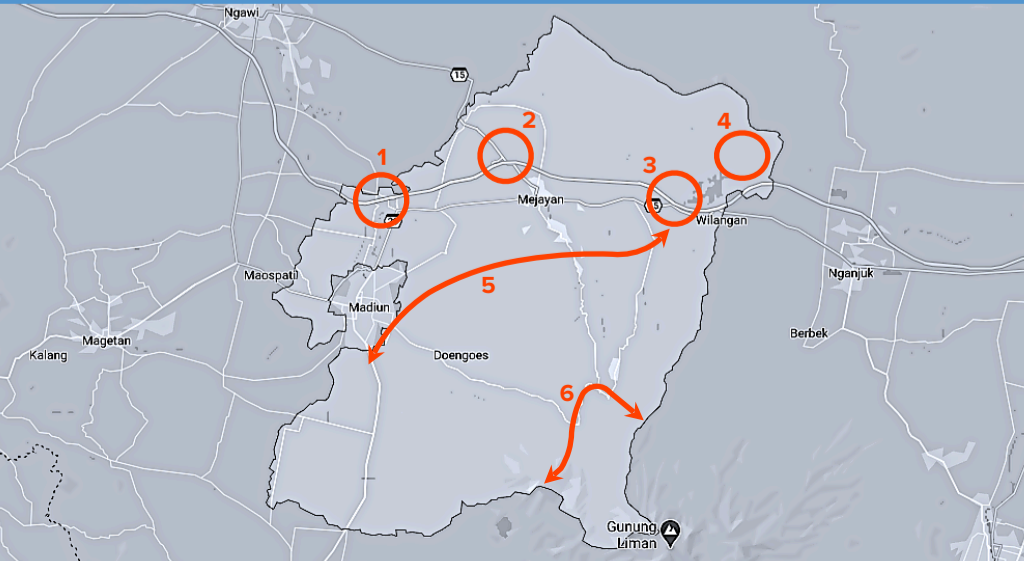
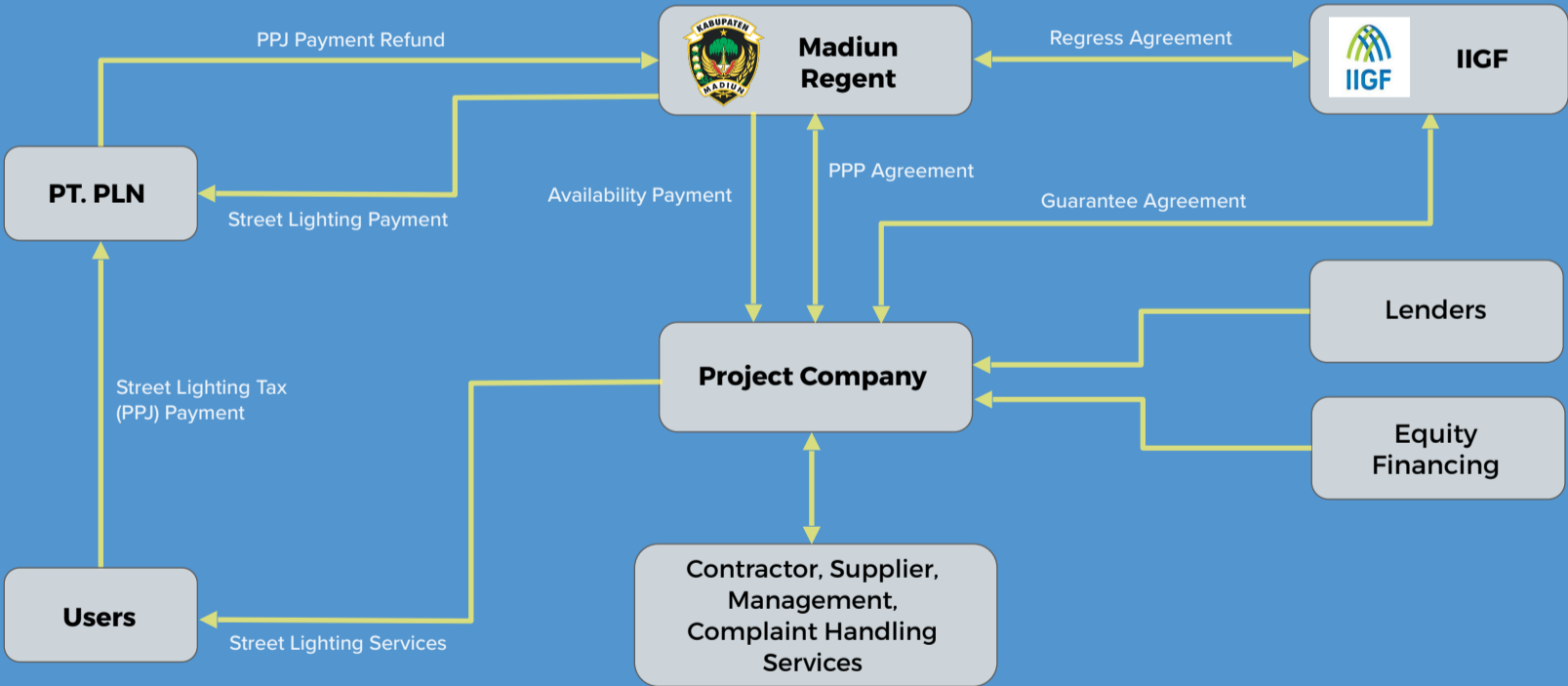


Project Location  
**Regency Roads (Primary Local Road, Secondary Local Road, Tertiary Local Road) in Madiun Regency**

Project Objectives

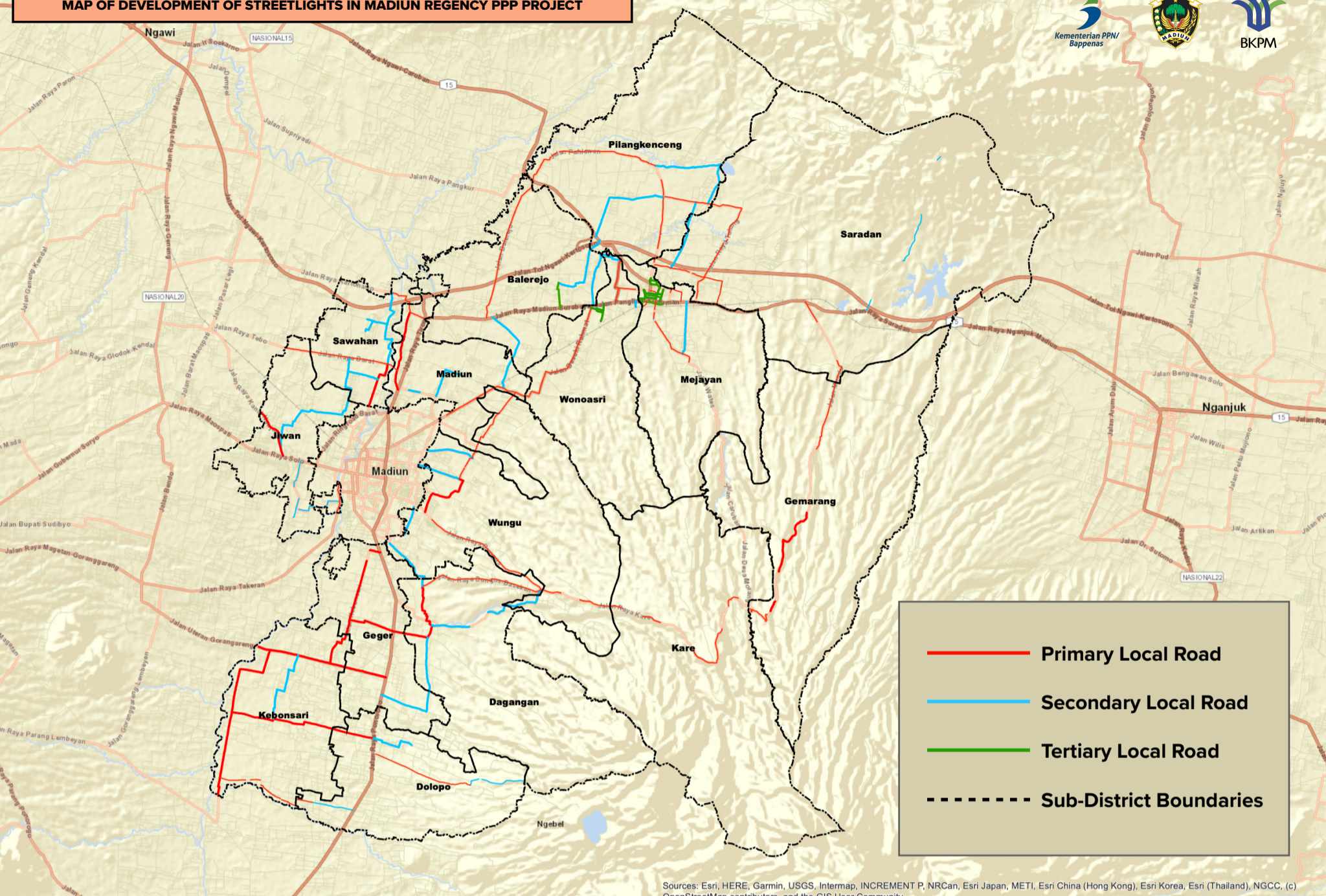
1. To ensure safety and convenience for road users and social activities in the neighbourhood
2. To support the plan for developing Caruban District, the capital of Madiun Regency, as the new centre of economy in the region
3. To provide energy-efficient street lighting
4. To support the economic development of Selingkar Wilis area that has potentials to attract investment (PR 80/2019)
5. To upgrade with metering systems

Capex (million rupiah)	Opex (million rupiah)	IRR (%)	NPV (million rupiah)	Payback Period (years)	EIRR (%)	ENPV (million rupiah)	Payback Period (years)
114,196	3,860	11,75	9,096	7	16,45	5,252	7



- Madiun Regency is located at East Java Province with Caruban City as the Government Centre
- In 2019, the population of Madiun Regency is 681,394 people, and the Population Density is 674 people/km<sup>2</sup>
- There are 15 sub-districts and 206 villages
- Connected to 3 interchanges on Trans Java toll road, namely Madiun Toll Exit (1), Caruban Toll Exit (2), Saradan Toll Exit plan (3), and also an Airport planned in the vicinity (4)
- Roads Development plan: South Ring Road (5) and Selingkar Wilis Road (6)
- It is the base for Porang plant agriculture which has reached export value of 880 billion and has been exported to China, Vietnam and Australia
- An open and safe investment service for investors with a public service mall

# MAP OF DEVELOPMENT OF STREETLIGHTS IN MADIUN REGENCY PPP PROJECT

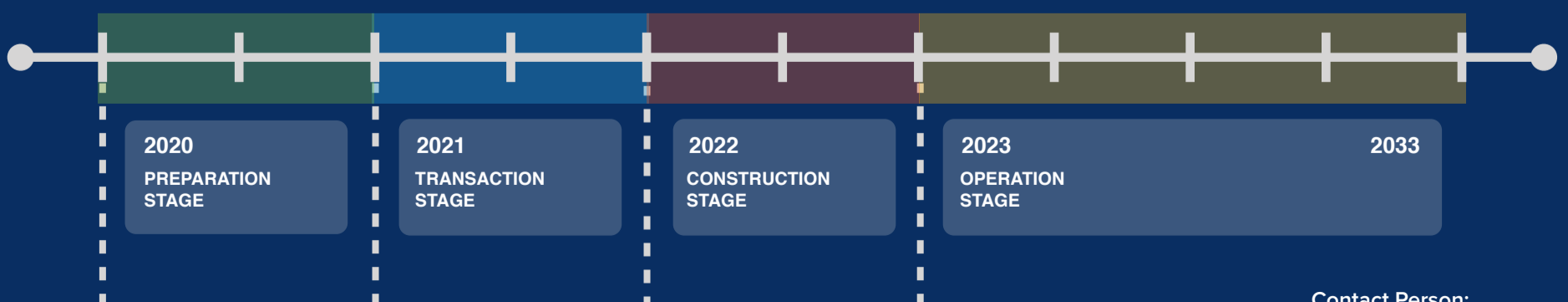


Sources: Esri, HERE, Garmin, USGS, Intermap, INCREMENT P, NRCan, Esri Japan, METI, Esri China (Hong Kong), Esri Korea, Esri (Thailand), NGCC, (c) OpenStreetMap contributors, and the GIS User Community



Regency Road	Road Length (KM)	Required PJU (Unit)
Primay Local Road	164,251	4.105
Secondary Local Road	91,313	2.319
Tertiary Local Road	18,507	505
Total	274,070	6.929

Pole Height	Pole Distance	Lamp Type	Electricity Metre	Underground Cable	New PJU Construction
7 m	40 m	LED	Yes	Yes	Yes



Contact Person:  
Ageng +62 811 3677 353