

DIRECTORATE GENERAL OF SEA TRANSPORTATION

PROJECT BACKGROUND

MALUKU

Ambon is a sustainable fish production area and become the center of national fisheries economic growth. Most of the fish production in Eastern Indonesia is sent to other regions for processing and exporting to other countries. The high cost of logistics is contributed by the low load factor of ports in the Eastern Region. In addition, existing Ambon Port (cargo and fisheries) is nearly approaching the maximum capacity. Facing this condition and supporting the improvement of connectivity and competitiveness of national logistics, Ministry of Transportation intends to develop a new multipurpose port in Central Maluku, Maluku Province. New Ambon Port is planned to be equipped with facilities for international container terminals, Ro-Ro (Roll On - Roll Off) terminals, fishing ports (fish auction / "TPI" and processing facilities) areas, Liquefied Natural Gas ("LNG") terminals and adequate power plants to become a sustainable port.



Maluku Province



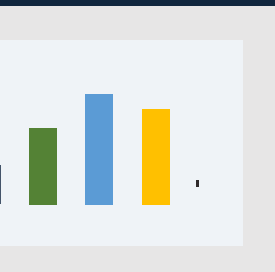
Ambon District



New Ambon Port



PROVINSI MALUKU



DIRECTORATE GENERAL OF SEA TRANSPORTATION

NEW AMBON PORT (1/2)

LOCATION: Ambon District, Maluku Province, Ambon Island, Indonesia

SOLICITED



Description:

The Port of New Ambon is integrated as a center for the growth of the fish processing industry and the consolidation of cargo from Eastern Indonesia. Integrated Port Development Concept which includes international and domestic container terminals, Roro terminals, fishing ports (TPI and processing sites), industrial and logistics areas, LNG terminals and power plants.

Project Scope of Work

1. Design and build port facilities for container, roro, fish processing, and LNG services;
2. Provision of port handling equipment and powerplants;
3. Operation and maintenance;
4. Provision of other port services.

Business Entity's Scope of Work:

TBC

Project Objectives

The development of the New Ambon Port is expected to improve connectivity, reduce logistics costs, increase market affordability, stimulate economic growth, and create new growth center for fish processing industry in eastern Indonesia

Land Acquisition and Resettlement Action Plan

TBC

Business Opportunity:

Bidder/financier

Project Status:

Project is currently on Preliminary Study Phase

Technical Specification:

Initial Stage (until 2036)

- Container Terminal Capacity 200.000 TEUs/year
- Multipurpose Terminal
- Fishing Port Terminal
- Ro-Ro Terminal

Ultimate Stage (until 2071)

- Container Terminal Capacity 750.000 TEUs/year
- Multipurpose Terminal
- Fishing Port Terminal
- Ro-Ro Terminal

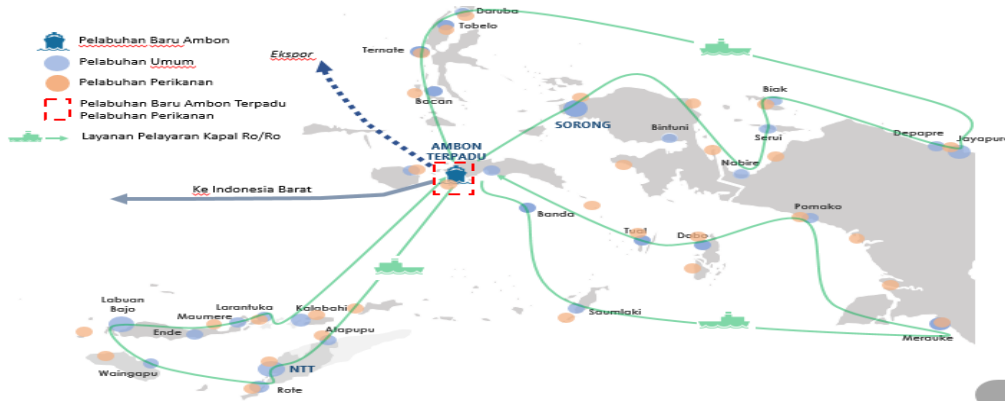
Environmental Impact Assessment (EIA/AMDAL) Findings

TBC
Will be based on the result of on-going feasibility study

DIRECTORATE GENERAL OF SEA TRANSPORTATION

NEW AMBON PORT (2/2)

LOCATION: Ambon District, Maluku Province, Ambon Island, Indonesia

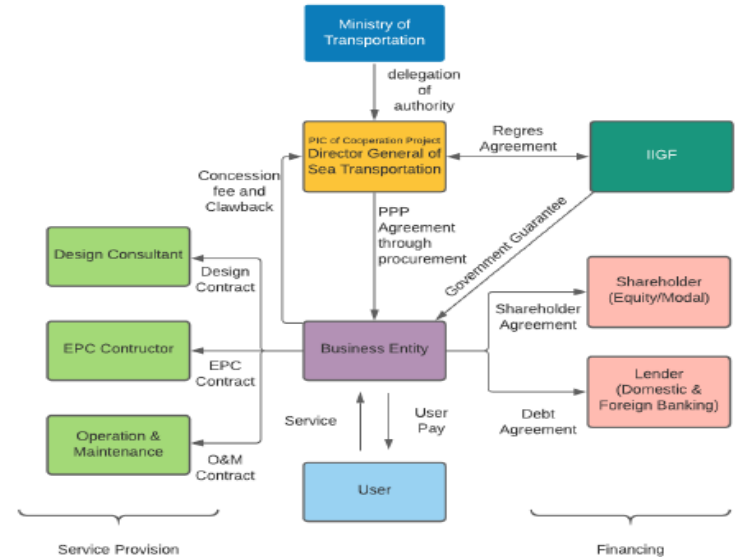


Sub-Sector: Port

GCA : Minister of Transportation- Directorate General of Sea Transportation
 Contact Person : Aries Wibowo
 Title : Head of Port Development Planning Sub-directorate
 e-mail : kpbupelabuhan@gmail.com
 Concession Period: TBC

Estimated Project Cost: USD 312 Million (4,46 Trilyun Rupiah)

Indicative Project Structure



Proforma Income Statement

Financial Feasibility:

FIRR : TBC
 NPV : TBC
 Debt:Equity : TBC

Return of Investment: TBC

Indicative Government Support & Guarantee:

Land Acquisition and basic infrastructure will be supported by Government.

Project Target:

Praqualification : 2022
 Bid Awards : 2022
 Operation : 2024

TBC

Will be based on the result of on-going feasibility study