

DIRECTORATE GENERAL OF SEA TRANSPORTATION

PROJECT BACKGROUND

SUMATERA

South Sumatra Province has rich potential for natural resources such as coal, palm oil and rubber. The potential distribution of these commodities needs to be supported by a good logistics system. Currently, the sea route logistics transportation in South Sumatra Province is mainly served by the Boom Baru Port. However, its location which is ± 108 km from the mouth of the Musi River makes it difficult for ships to reach because of the limited width and depth. Sedimentation that occurs along the river also results in the need for high maintenance costs. In addition, the location of the Boom Baru Port, which is also adjacent to the city, is an inhibiting factor for port development, especially on the land side. In order to accelerate connectivity and competitiveness of national logistics, the government, through the Ministry of Transportation intends to develop a new port (New Palembang Port) in Tanjung Carat, Banyuasin Regency. The selection of a new port location at the estuary with sufficient width and depth is expected to be a sustainable solution to address the problems faced by the existing port.



South Sumatra Province



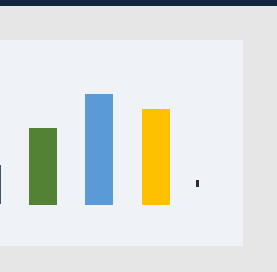
Banyuasin Regency



New Palembang Port



SOUTH SUMATERA PROVINCE



DIRECTORATE GENERAL OF SEA TRANSPORTATION

NEW PALEMBANG PORT (1/2)

LOCATION: Banyuasin Regency, South Sumatera Province, Sumatera Island, Indonesia

SOLICITED



Description :

The sea route is used for dry bulk, liquid bulk and containers from Boombaru Port to other major ports. However, the capacity of Boombaru Port almost at its limit and The New Palembang Port comes as the solution. Moreover, with the construction of the Trans Sumatra toll road that connects Palembang City to other big cities in Sumatra will increase the traffic of the New Palembang Port.

Business Entity's Scope of Work:

TBC

Project Objectives

- Increase Domestic and International Trade in South Sumatra
- Improve connectivity and reduce logistic cost

Land Acquisition and Resettlement Action Plan

Land area will be acquired through conversion of existing forest areas

Business Opportunity:

Bidder/financier

Project Status:

Project is currently on Identification Phase (Preliminary Study)

Project Scope of Work

1. Design and build port facilities for container, liquid, and dry bulk services;
2. Provision of port handling equipment;
3. Operation and maintenance;
4. Provision of other port services.

Technical Specification:

Initial Stage :

Provision of Container Terminal with Capacity 300.000 TEUs/ year

Ultimate Stage

- Container Terminal 700.000 TEUs/year
- Dry Bulk Terminal
- Liquid Terminal

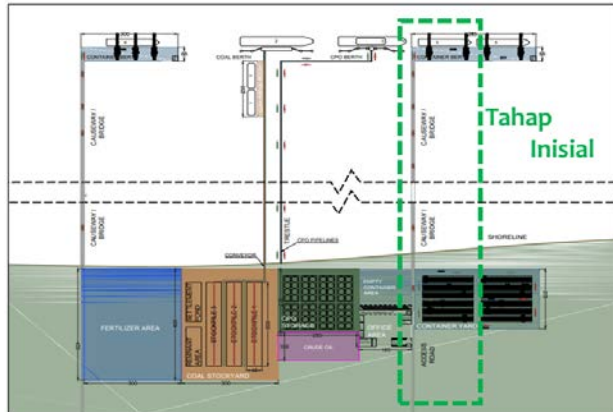
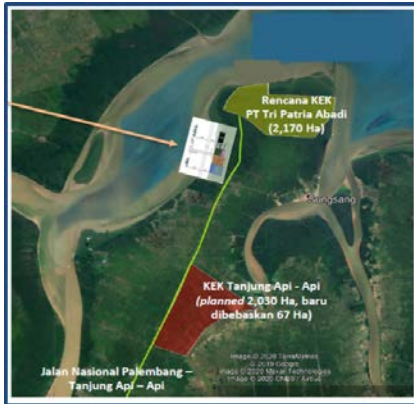
Environmental Impact Assessment (EIA/AMDAL) Findings

TBC
Will be based on the result of on-going feasibility study

DIRECTORATE GENERAL OF SEA TRANSPORTATION

NEW PALEMBANG PORT (2/2)

LOCATION: Banyuasin Regency, South Sumatera Province, Sumatera Island, Indonesia

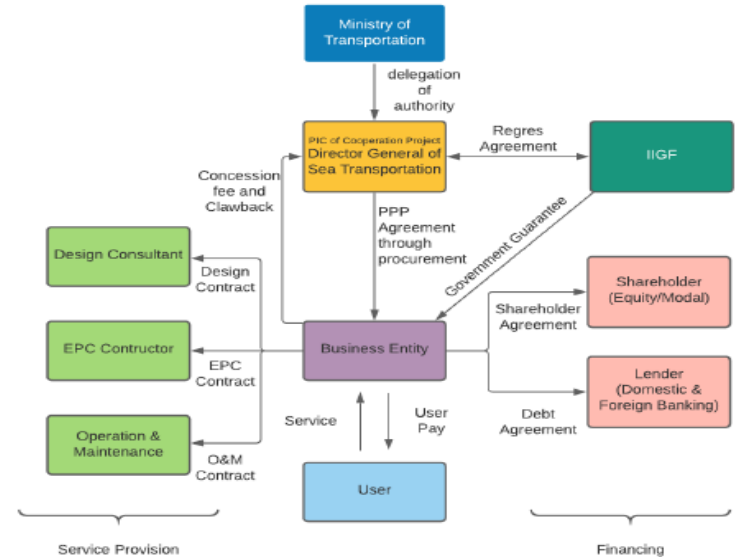


Sub-Sector: Port

GCA : Minister of Transportation- Directorate General of Sea Transportation
 Contact Person : Aries Wibowo
 Title : Head of Port Development Planning Sub-directorate
 e-mail : kpbupelabuhan@gmail.com
 Concession Period: TBC

Estimated Project Cost: USD 320 Million (4,6 Trilyun Rupiah)

Indicative Project Structure



Proforma Income Statement

TBC
 Will be based on the result of on-going feasibility study

Financial Feasibility:

FIRR : TBC
 NPV : TBC
 Debt:Equity : TBC

Return of Investment: TBC

Indicative Government Support & Guarantee:

Land Acquisition and basic infrastructure will be supported by Government.

Project Target:

Praqualification : 2022
 Bid Awards : 2022
 Operation : 2024